



ADARSH
MAYBERRY

BELLANDUR



An artistic rendering of the Adarsh Mayberry apartment complex. The image shows several tall, modern apartment buildings with a mix of white and grey facades and large windows. The buildings are set against a clear blue sky with a few wispy clouds. In the foreground, there is a green lawn with some small trees and shrubs. The overall scene is bright and sunny.

A LIFE FULFILLED

Rare, but not unattainable, as one will discover when life unfolds at Adarsh Mayberry.

Residences here are designed on the same principles of excellence that the Adarsh name stands for. Spacious and modern, bright and airy, blessed with scenic views and with amenities that are life enhancing. A fine attention to detail and exceptional thinking make these residences an ideal livespace.

Mayberry rises to a height of 13 floors, spread across two phases (Phase 1 comprising up to 7th floor and phase 2 comprising of 8th to 13th floor) and it also has the privilege of being in the neighbourhood of the prestigious 'Adarsh Palm Retreat'. This exclusive gated community gives you round the clock security that assures safety, privacy and peace of mind.

Close to primary destinations like workplaces, leisure hotspots, life care facilities and educational institutions amidst others, life here is more complete, more meaningful.

With over 20,000 jobs around the Adarsh Mayberry, these residences assure rental income and a good return on investment.

A universe that nurtures living, with care and attentiveness, leads one to life fulfillment.

LOCATION MAP



KEY DISTANCES APPROX:

- HSR Layout - 6 km
- Silk Board - 8 km
- Electronic City - 13 km
- ITPL - 15 km
- MG Road - 15 km

SCHOOLS:

- GEAR Innovative International School
- Inventure Academy
- Oakridge International School
- NPS Bangalore
- DPS Bangalore East
- New Horizon College
- Ryan International School
- Insight Academy

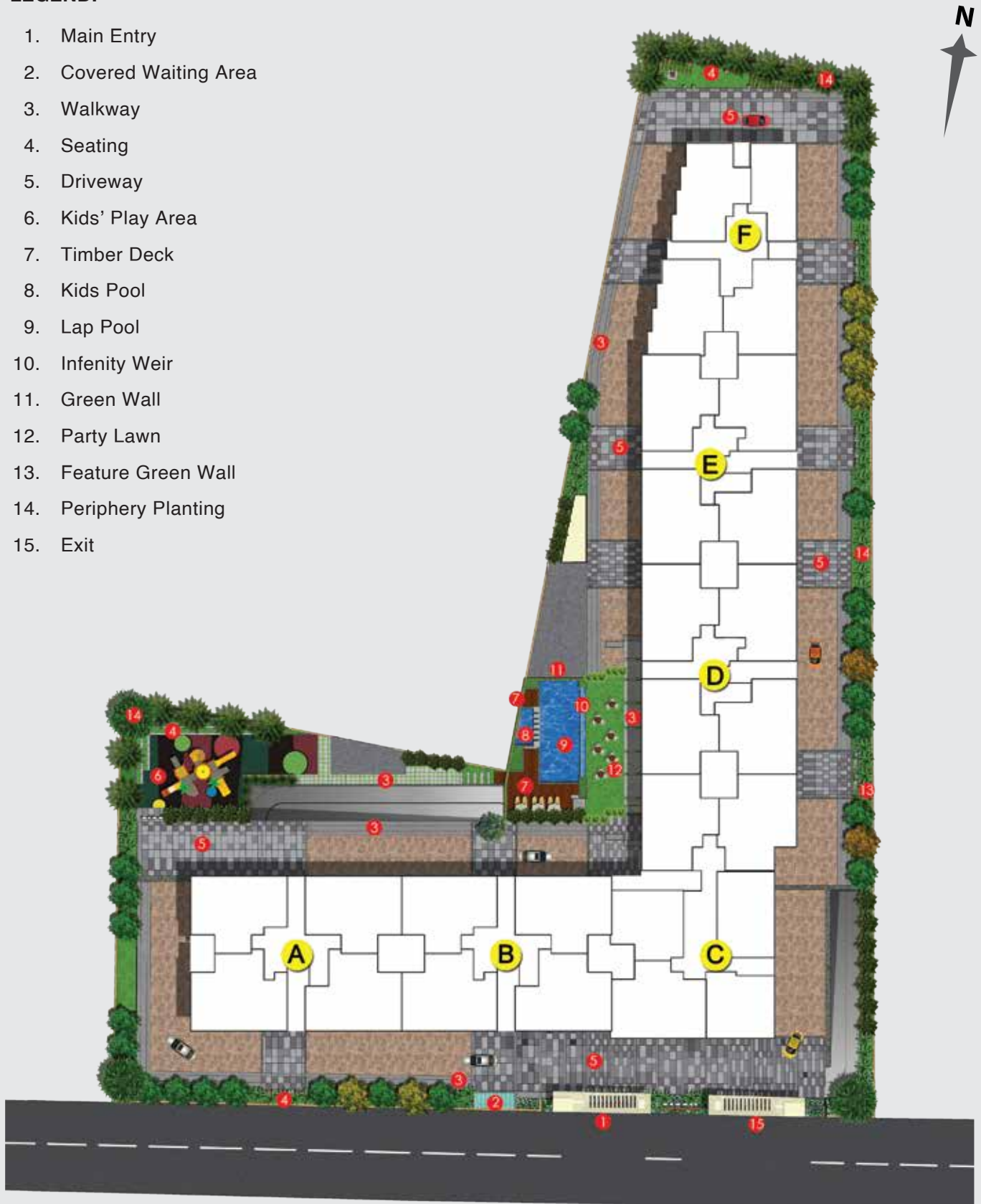
HOSPITALS:

- Sakra Hospital
- Motherhood Hospital
- Narayana Hrudayalaya Super Speciality Hospital
- St. John's Hospital

FACILITY PLAN

LEGEND:

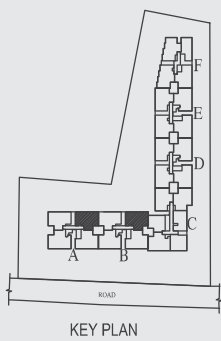
1. Main Entry
2. Covered Waiting Area
3. Walkway
4. Seating
5. Driveway
6. Kids' Play Area
7. Timber Deck
8. Kids Pool
9. Lap Pool
10. Infinity Weir
11. Green Wall
12. Party Lawn
13. Feature Green Wall
14. Periphery Planting
15. Exit



The landscaping is purely indicative and for representation purposes only.

3 BHK

BLOCK A & B
TYPE - A2 & TYPE - B2

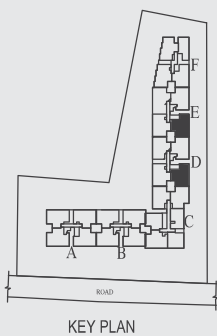


SBUA		CARPET AREA	
SQ. MTS.	SQ. FT.	SQ. MTS.	SQ. FT.
164.03	1765	111.24	1197

LEGEND		
No.	Description	Size
1	Living	12'0"x15'4"
2	Balcony	11'6"x5'0"
3	Dining	11'8"x12'10"
4	Kitchen	11'0"x9'0"
5	Utility	5'9"x8'8"
6	Guest Bedroom	10'6"x14'0"
7	G.Toilet	5'6"x8'6"
8	Childrens Bedroom	11'0"x13'6"
9	Balcony	11'0"x5'0"
10	Walk-in Wardrobe	5'0"x8'6"
11	Attached Toilet	5'6"x8'6"
12	Master Bedroom	11'0"x14'6"
13	Walk-in Wardrobe	5'0"x13'0"
14	Attached Toilet	5'6"x8'6"

3 BHK

BLOCK D & E
TYPE - D3 & TYPE - E3

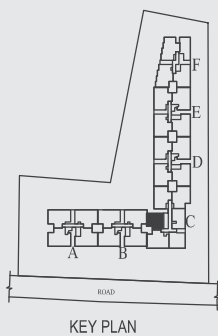


SBUA		CARPET AREA	
SQ. MTS.	SQ. FT.	SQ. MTS.	SQ. FT.
164.96	1775	112.63	1212

LEGEND		
No.	Description	Size
1	Foyer	11'2"x5'5"
2	Living	15'4"x12'0"
3	Balcony	5'0"x11'6"
4	Dining	12'10"x11'8"
5	Kitchen	9'0"x11'0"
6	Utility	8'8"x5'9"
7	Guest Bedroom	14'0"x10'6"
8	G.Toilet	8'6"x5'6"
9	Master Bedroom	13'6"x11'0"
10	Balcony	5'0"x11'0"
11	Walk-in Wardrobe	8'6"x5'0"
12	Attached Toilet	8'6"x5'6"
13	Children's Bedroom	14'6"x11'0"
14	Attached Toilet	7'6"x5'6"

2 BHK

BLOCK C
TYPE - C6



LEGEND

No.	Description	Size
1	Entry	4'0"x6'6"
2	Foyer	4'0"x6'6"
3	Living	12'0"x13'2"
4	Balcony	11'6"x5'0"
5	Dining	11'8"x12'9"
6	Kitchen	11'9"x8'0"
7	Utility	5'9"x7'6"
8	Childrens Bedroom	10'6"x12'2"
9	G. Toilet	5'6"x8'6"
10	Master Bedroom	11'0"x16'0"
11	Walk-in Wardrobe	5'0"x8'6"
12	Attached Toilet	5'6"x8'6"

SBUA		CARPET AREA	
SQ. MTS.	SQ. FT.	SQ. MTS.	SQ. FT.
125.46	1350	86.97	936

SPECIFICATIONS

STRUCTURE

- Seismic zone II compliant RCC framed structure.
- Masonry-walls with concrete blocks.

PLASTERING

- All internal walls smoothly plastered with lime rendering.
- External plastering with sponge finish.

FLOORING

- Good quality vitrified tiles in living, dining & kitchen.
- Laminated wooden flooring in all bedrooms.
- Ceramic tiles for balconies, utility area & toilets.
- Granite/vitrified tile flooring in ground floor lobby.
- All other lift lobbies with vitrified tiles.

TOILETS

- Good quality ceramic tile dado up to 7 feet (2.15m) height in all toilets.
- White color EWC & washbasin with granite counter top & mirror for all toilets.
- Toughened glass partition with openable shutter in master bedroom toilet.
- Single lever mixer with shower rail & hand shower for all showers and single lever mixer for all washbasins.
- Exterior: acrylic emulsion paint.
- Enamel painting for MS grill/railings.

PLUMBING

- Good quality CP fittings.
- Good quality PVC drainage & storm water pipes.
- Dual piping for fresh water in shower/washbasin/toilet faucet/kitchen and recycled treated water for toilet flushes.

ELECTRICAL

- TV, Telephone, Networking and Electrical AC points in all bedrooms & living area.
- Exhaust fan provision in kitchen & all toilets.
- Two Earth Leakage Circuit Breaker (ELCB) for each apartment. (One for AC & heating and the other for lighting).
- Good quality electrical wires and switches.
- Provision for ceiling fan in living/dining and all bedrooms.
- Health faucet in all toilets.
- Geyser in all toilets.

DOORS

- All doors with engineered door frames & skin paneled shutters.
- UPVC sliding doors with 3-track (one with mosquito mesh) for living room to balcony & bedroom to balcony doors.

WINDOWS

- UPVC sliding windows with three tracks (one with mosquito mesh).
- M.S. grills (from inside) for windows in the first floor only.
- UPVC ventilators with translucent glass in all toilets.

KITCHEN

- Granite platform with stainless steel sink & drain board with sink mixer.
- 2 feet dado above platform area with ceramic glazed tiles.
- Provision for water purifier point.
- Provision for washing machine and gas cylinder in utility area.

PAINTING / POLISHING

- Interior: plastic emulsion paint.

LIFT

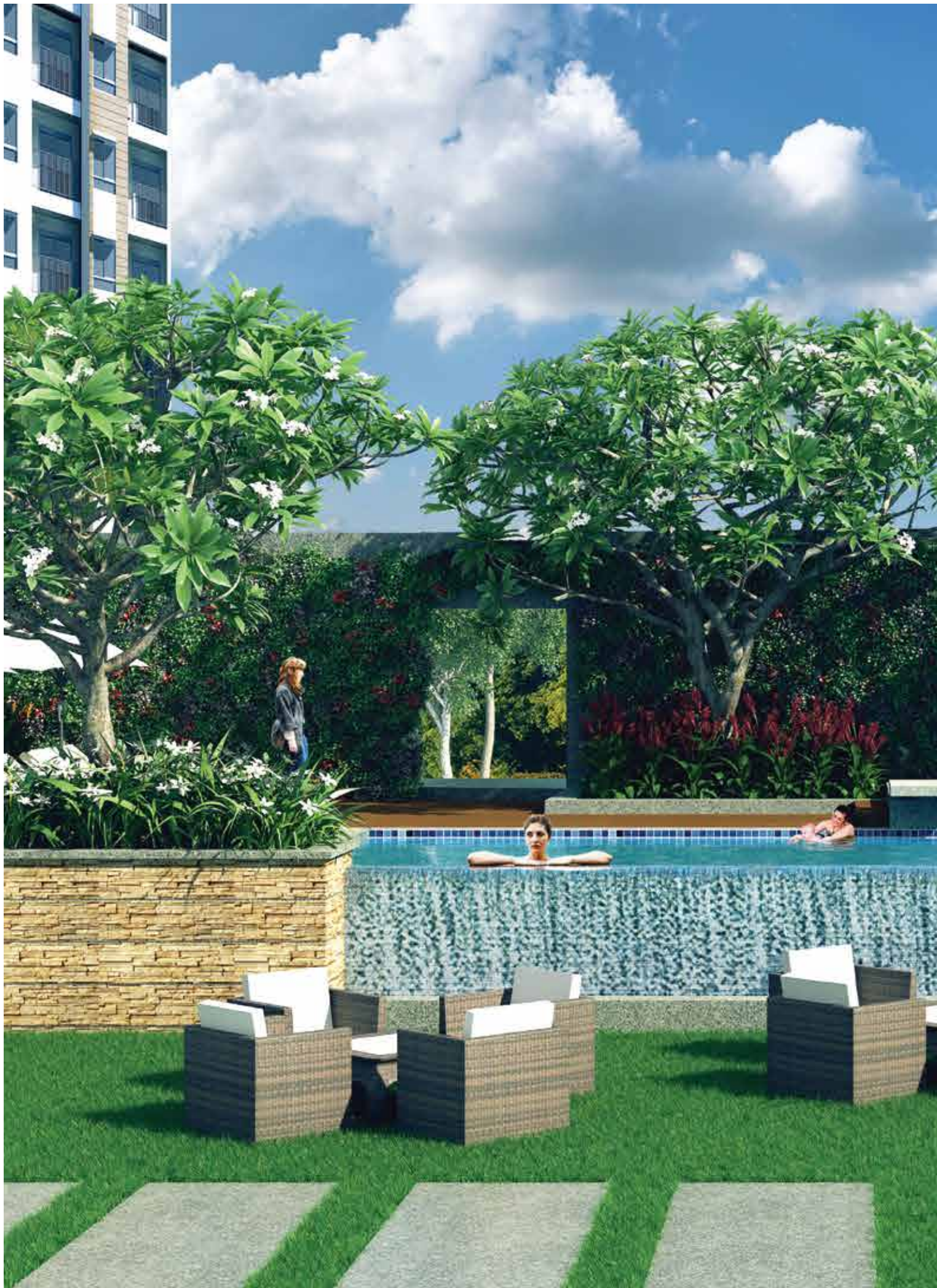
- Two lifts for each block.

OTHERS

- Fiber to the home (Data & Voice).
- Internal telephone cabling/wiring for all apartments.
- CCTV surveillance for common areas and access controlled entry & exit.

RAIN WATER HARVESTING

- Common rain water harvesting system as per Municipal guidelines.



LEISURE AND ITS MANY PURSUITS

Enjoy the luxury of being able to indulge in your favourite sport or leisure activity. Let your racket do the talking at table tennis, take a dip in the pool, sweat it out at the gym or soak in the sight of your children having a wonderful time at the tot areas. Life is not just enjoyable, it feels enriched because every amenity adds that little extra to your living experience here.



Multipurpose Hall



Table Tennis



Pool Table



Badminton Court



Swimming pool



Health Club



Gym



Children's Play Area

Artistic impression

Artistic impression



Sales Lounge: Adarsh Mayberry, Survey No. : 24/1, 24/2, 24/3,
Doddakannelli Road, Phase 3, Adarsh Palm Retreat, Bellandur,
Bengaluru, Karnataka - 560035
63649 21355 | enquiry@adarshdevelopers.com

www.adarshdevelopers.com



A member of CREDAI BENGALURU

RERA No.: EX/PRM/KA/RERA/1251/310/PR/221121/002367
For more details: www.rera.karnataka.gov.in